

Trimble Construction One™

A connected construction technology suite



Contents

Trimble Construction One
A connected construction
technology suite



01

Page 4
Introducing Trimble
Construction One

02

Page 5
How does Trimble
Construction One work?

03

Page 7
Who benefits from
Trimble Construction One?

04

Page 9
Design, detailing, and
modeling applications

05

Page 12
Construction
estimating applications

06

Page 15
Construction project
management applications

07

Page 18
Steel fabrication
applications

08

Page 21
Field technology
applications

09

Page 24
Construction financial and
back-office management
applications



It's time for a modern construction tech stack

Today's construction projects are more ambitious, complex, demanding, and ultimately challenging than ever before. Turnaround times are faster, materials and labor are more expensive, economic and supply chain impacts are greater, and risks are higher—all while profit margins for construction companies have remained largely stagnant.

Managing your projects and running a construction business with manual processes, disconnected technologies, and siloed workflows might have been good enough to get by in the past. Today, however, this practice is a sinking ship you don't want to stay on.

Trimble Construction One™

Connected construction to the rescue

A connected construction experience is one in which construction firms have access to a common data environment with a standardized set of connected workflows across all stakeholders, departments, and disciplines of the construction process. A connected construction experience facilitates better communication and collaboration among business silos.¹

By enhancing project visibility and predictability, providing real-time access to business data, and enabling collaboration and integrated decision making, the connected construction experience can help owners, designers, engineers, and contractors realize more consistent, streamlined, and predictable project execution.

This connected construction experience leads to quicker, more accurate decision making, spotting risks before they become problems, more efficient and sustainable building, and higher profit margins on work executed.

¹ Excerpt from the whitepaper, "Connected Construction: A New Technology Mindset for a New Era," produced by GlobalData and Trimble.



01

Introducing Trimble Construction One

The connected construction experience is available today. **Trimble Construction One** is a connected solution suite, built to meet the specific needs of construction companies.

Trimble Construction One brings everyone together—field teams, operations teams, back-office teams, and extended project teams of architects, owners, engineers and others—through industry-leading Trimble solutions connected in a shared data and workflow environment. It's the construction tech stack you've dreamed about, all managed under a single contract.

02

How does Trimble Construction One work?

Trimble bundles solutions and connects data and workflows between them so that construction firms can deploy a comprehensive construction tech stack. One contract, one vendor to partner with, and trusted cloud technologies driving the back-end combine to alleviate your technology management burden.

Here's a look at some of the key capabilities that drive this connected construction experience

Work Center: Trimble Construction One provides each named user with a single sign-on portal to access the Trimble solutions to which they have access and permissions. This portal serves as their personalized, customizable dashboard, where they can see real-time data and alerts, easily dive into solutions or workflows, access learning and support resources, and even explore other Trimble solutions they might not be using or familiar with.

Trimble Connect: This is an open, cloud-based collaboration tool for sharing project information between teams. Trimble Connect provides contractors with a common data environment. This environment eliminates data silos and allows all project stakeholders to share, review, and comment on models in real time. Trimble Connect synthesizes 3D models, 2D drawings, and other project documentation. Users can access Trimble Connect via web browsers, on mobile devices, in Windows apps, through augmented reality (AR) applications, or on mixed reality (MR) headsets.

Intuitive mobile applications: Trimble understands construction management doesn't just happen in the back office. That's why many Trimble Construction One solutions are web- and mobile-enabled, expanding access to critical information sharing and workflows to the field and extended project stakeholders in real time. From design and estimating tools, to project management, to field and service management applications, and financial and analytical solutions, Trimble Construction One is designed to drive a modern working environment to meet modern construction demands.

Leading-edge data security: With on-premises software applications proving more vulnerable to data security threats every day, Trimble Construction One provides enhanced protections for your business, including single sign-on, multi-factor authentication, and continuously backed-up data. Trimble partners with leading cloud hosting and security providers to keep your data safe, and provides disaster recovery measures that ensure your business continuity at all times.



“Trimble Construction One has elevated the quality of our project accounting and analysis. Instead of out-of-the-date information, our teams are using real-time data to monitor project activity and performance.”

—Jim Voss, CFO,
Advanced Technology Group



Who benefits from Trimble Construction One?

How do you know if Trimble Construction One is right for your company?



“It’s a best-case scenario for Power Design. We get a predictable cost and we don’t have any of the unforeseen repairs or unforeseen things that have been happening [with our robotic total stations]”

—Rick Grover, VP of Prefabrication, Power Design Inc.



Thousands of construction companies rely on Trimble solutions to manage their projects and drive their business every day. For more than 40 years, Trimble has invested in delivering the latest technologies to contractors to help them innovate, grow, and succeed. Trimble Construction One is the culmination of these efforts, bringing a connected construction experience ideal for:

- **General contractors**
- **Steel fabrication contractors**
- **Concrete contractors**
- **Electrical contractors**
- **Mechanical contractors**
- **Civil contractors**

Over the following pages, you’ll learn how Trimble Construction One’s bundled, connected solutions drive value across a range of construction disciplines and roles. Get a full look at the different Trimble Construction One bundles and products available today for:

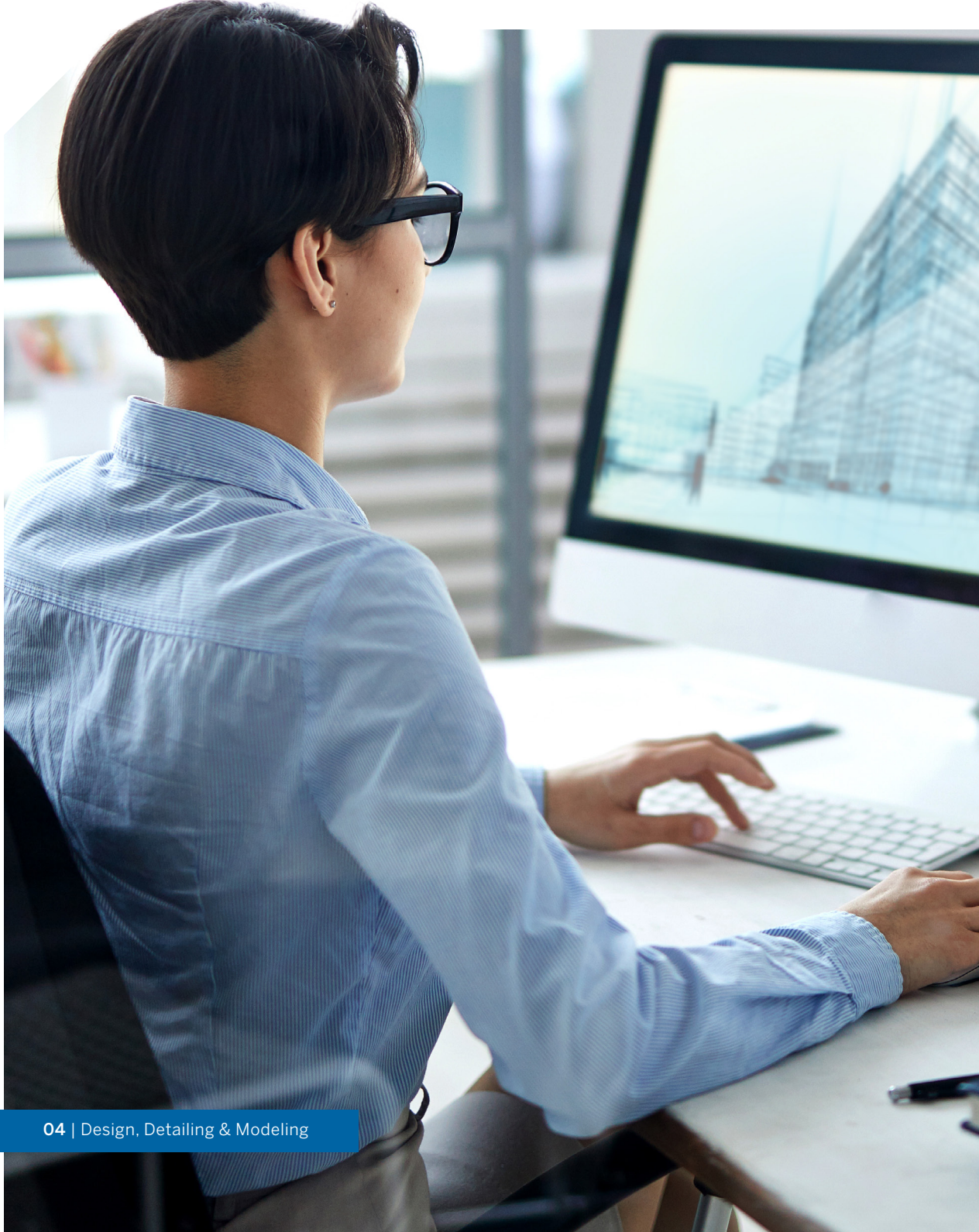
- **Design, detailing and modeling**
- **Estimating**
- **Project management**
- **Steel fabrication**
- **Field technology**
- **Financial and back-office management**
- **Civil construction (coming soon)**



04

Design, detailing and modeling

Ensure your construction vision becomes reality through accurate conceptual, schematic, and constructible models that deliver real-time data and clear direction to fabrication and construction teams.



Imagine if...

Architects, you can quickly capture design ideas in a format that's easily understood by clients and stakeholders. You complete the design in 3D, which allows you to run multiple design scenarios to incorporate your clients' feedback, but also to optimize its constructability, cost, and sustainability, and the process is easy and straightforward.

Structural engineers, you have instant access to all the information you need to produce a safe, code-compliant design. You can model the structure in 3D and easily run multiple scenarios to optimize its constructability, cost, and sustainability.

Detailers, the moment you sit down at your computer, you have easy access to the complete design documentation. Once you finish detailing the model, the software then automatically creates the fabrication documentation, including drawings, NC, and other production files for automated and even autonomous robotic equipment.

Trimble Construction One makes this dream a reality with these connected design, detailing and modeling bundles. Create accurate conceptual, schematic, and design models that are easily communicated and understood by all project stakeholders.



With Trimble Construction One's design, detailing, and modeling bundles, you can:

- Visualize with ease and create predictable, easily implementable plans
- Build with confidence in constructability and compliance
- Connect designs and 3D models with flawless documentation
- Automate processes to manage changes more effectively
- Respond more quickly to organizational needs

Design

Trimble Construction One Design is a 3D design and structural analysis solution that delivers automated, safe, value-engineered, and code-compliant designs for all structural materials.

Trimble products included:

- SketchUp Pro
- Tekla Structural Designer
- Tekla Tedds
- Connect Business Premium

Detailing & Fabrication

Trimble Construction One Detailing and Fabrication is the most robust solution for architects, engineers, and contractors to design, detail, and build from constructible, fully detailed 3D models.

Trimble products included:

- Sketchup Pro
- Tekla Structures Diamond
- Tekla Structural Designer
- Tekla Tedds
- Tekla Model Sharing
- Connect Business Premium

Modeling

Trimble Construction One Modeling is a streamlined, collaborative design and modeling solution that seamlessly connects conceptual design to structural engineering to construction documentation.

Trimble products included:

- SketchUp Pro
- Tekla Structures Graphite
- Tekla Structural Designer
- Tekla Tedds
- Tekla Model Sharing
- Connect Business Premium

VDC Pro+

Trimble Construction One VDC Pro+ is an all-in-one design and detailing subscription specifically for MEP detailers that provides what they need to design, fabricate, plan, and collaborate on real-world constructible models.

Trimble products included:

- SysQue
- RFA Content
- MEPContent for Fabrication
- Connect AR
- Estimation MEP Pro
- Supplier Xchange
- Construction Analytics
- Connect2Fab
- Connect Business Premium

A large, white, stylized number '05' is centered on the page. The '0' is a simple circle, and the '5' has a thick, rounded top and a vertical stem.

Estimating

Deliver accurate estimates in a timely manner to avoid costly missteps and delays, maximize profit on construction projects, and win more work.



Imagine if...

Estimating professionals, you arrive at your office and log into your estimating solutions through a simple connected construction management platform. Within seconds, you see the bid packages you need to build, have immediate access to vendors, and see live, real-time estimating and takeoff data for your existing bids in simple formats.

Building a bid in real time has never been easier. Streamlined data and workflows allow you to easily connect with the project managers, the back office, the field teams, and any external stakeholders to share information or answer any questions. A connected construction estimating experience can be a powerful tool to ensure accuracy amid tight project timelines.

Trimble Construction One makes this dream a reality with these connected estimating bundles. Deliver accurate estimates in a timely manner for more profitable projects.



WinEst Essentials

Trimble Construction One WinEst Essentials is a bundled offering for general contracting and sub-specialty (non-MEP) estimators that allows them to build profitable estimates confidently and better collaborate throughout their pre-construction workflows.

Trimble products included:

WinEst e-Team
eTakeoff
Modelogix
Advanced Image Manager
BNi Bronze Database
Schedule Link
Trimble Commercial & Assemblies
Connect Business Premium

AutoBid Essentials

Trimble Construction One AutoBid Estimating Essentials provides all the essential tools that mechanical, piping, plumbing, and sheet metal/HVAC estimators need in an on-premises or hosted subscription package.

Trimble products included:

AutoBid
Advanced Image Manager
Estimation MEP Pro
Supplier Xchange
TRA-SER (US only)
Allpriser (TRA-SER Canada)
Submittal Manager
Connect Business Premium

Accubid Anywhere

Trimble Construction One Accubid Anywhere is a comprehensive, cloud-hosted, spec-driven estimating solution for electrical and industrial mechanical contractors available as an all-in-one, easy-to-manage subscription.

Trimble products included:

Accubid Anywhere
Advanced Image Manager
LiveCount Cloud Pro
Supplier Xchange
TRA-SER (Electrical/Plumbing)
Submittal Manager (Electrical/Plumbing)
Connect Business Premium

With Trimble Construction One's estimating bundles, you can:

- Build accurate, more profitable bids, while meeting deadlines
- Access up-to-date labor, vendor, and material pricing data
- Support pre-construction workflows with easy data-sharing
- Connect digital takeoff to estimates
- Respond more quickly to organizational needs

Accubid Classic Essentials

Trimble Construction One Accubid Classic Essentials is an estimating solution for electrical contractors that provides easy-to-use tools to build better, more accurate estimates. This solution is not available on the cloud.

Trimble products included:

Accubid Classic Pro
Advanced Image Manager
Estimation MEP Pro
Accubid Classic ChangeOrder Pro
LiveCount Cloud Pro
Submittal Manager
Supplier Xchange
TRA-SER
Connect Business Premium

Estimation MEP Pro

Trimble Construction One Estimation MEP Pro is a fully integrated, fully web estimating solution for electrical and mechanical (not sheet metal) MEP contractors designed to streamline the estimating process. It is currently best positioned for smaller contractors.

Trimble products included:

Estimation MEP Pro
Supplier Xchange
Connect Business Premium

A large, white, stylized number '06' is centered on the page. The '0' is a simple circle, and the '6' has a curved top and a short tail. The background is a dark blue gradient with a faint city skyline silhouette at the top.

Project management

Build on time, on budget, and in scope. Get the information you need—when you need it—to keep your people and projects moving in the right direction.



Imagine if...

Project managers, you arrive at your office or work trailer and log into your entire construction management platform with one password. Within seconds, live, real-time data populates your screen and, thanks to several task alerts, you instantly know exactly what your key issues are for today, and which projects or areas need help.

With just a few clicks, you turn that data into dozens of actionable decisions and workflows that spread from the back-office to the field and to the entire extended project team and external stakeholders, all before your first sip of coffee. This connected construction experience provides project managers and operations professionals what they need most—valuable time back in their day. It's project management the way it should be.

Trimble Construction One makes this dream a reality with these connected project management bundles. Build on time, on budget, and in spec.

With Trimble Construction One's project management bundles, you can:

- Create and collaborate more effectively
- Increase visibility and accountability
- Work from a single source of project information
- Become more data driven with dynamic reporting and analytics
- Respond more quickly to organizational and client needs

ProjectSight: Budget & Cost Management

Trimble Construction One ProjectSight - Budget & Cost Management is a construction project management solution that streamlines real-time project collaboration and budget and cost management, helping teams make data-driven decisions to improve productivity and optimize project delivery.

Trimble products included:
ProjectSight (with Budget & Cost Management)
Connect Business Premium

ProjectSight: Budget & Cost Management with Field

Trimble Construction One ProjectSight - Budget & Cost Management with Field is a comprehensive project management solution that streamlines all back-office activities, including cost management, project analytics, and document collaboration. The ERP integration also allows an unobstructed view into the project's financial health.
Requires a Viewpoint ERP.

Trimble products included:
ProjectSight (with Budget & Cost Management)
Connect Business Premium
Viewpoint Spectrum or Vista PM Module
Viewpoint Payroll Time Entry (Spectrum only)
Viewpoint Field Management (Vista only)
Viewpoint Spectrum or Vista Financial Controls
Viewpoint Analytics

ProjectSight for MEP: Base

Trimble Construction One ProjectSight for MEP is a basic project management solution that allows contractors and MEP professionals to work in real time, providing a complete view of projects and the scope of work.

Trimble products included:
ProjectSight (No Budget & Cost Management)
Connect2Fab
Estimation MEP Base
Submittal Manager
Connect Business Premium

ProjectSight for MEP: Budget & Cost Management

Trimble Construction One ProjectSight for MEP - Budget & Cost Management provides MEP professionals with a single source of information to manage budget and costs, RFIs, submittals, fabrication, and more—from the back office to the field, in real-time.

Trimble products included:
ProjectSight (With Budget & Cost Management)
Connect2Fab
Estimation MEP Base
Submittal Manager
Connect Business Premium

ProjectSight for MEP: Budget & Cost Management with Field

Trimble Construction One ProjectSight for MEP - Budget & Cost Management with Field is a complete construction management solution that transforms the MEP prefabrication and fabrication workflows with a seamless connection among the design, financial, and fabrication systems. The ERP integration also allows an unobstructed view into the project's financial health.
Requires a Viewpoint ERP.

Trimble products included:
ProjectSight (with Budget & Cost Management)
Connect2Fab
Estimation MEP Base
Submittal Manager
Connect Business Premium
Viewpoint Spectrum or Vista PM Module
Viewpoint PTE (Spectrum) or Field Management (Vista)
Viewpoint Spectrum or Vista Financial Controls
Viewpoint Analytics

A large, white, stylized number '07' is centered on the page. The '0' is a thick, rounded shape, and the '7' is a simple, bold numeral.

Steel fabrication

Remove uncertainty from the fabrication process with real-time data and collaborative workflows to boost overall project performance and profitability.



Imagine if...

You had easy access to relevant project information to check status and schedules of your projects. You instantly see inventory levels and incoming and outgoing shipping statuses—including subcontracted work—with the click of a button. When you need to procure materials, you can easily define what is needed and when. Your detailers know your shop equipment and are able to optimize the details for straightforward fabrication, delivering the right files at the right time in the right format.

In this connected fabrication world, team members know what they need to do now and what comes next. When questions arise, anyone can check the drawing and the model. All shop work—labor hours, completed cutlists, and quality control results—are seamlessly recorded in digital formats and entered in real time. You don't need to spend hours on administrative tasks. Your projects run on budget and within the agreed schedule.

Trimble Construction One makes this dream a reality with these connected steel fabrication bundles. Ensure precision and adherence to quality standards.



With Trimble Construction One's steel fabrication bundles, you can:

- Boost pre-fabrication shop performance
- Simplify production and inventory operations
- Deliver timely estimates to win jobs
- Procure the right materials at the right time to avoid unexpected cost overruns
- Nail your production and delivery schedules and build a reputation for predictable work

PowerFab

Trimble Construction One Tekla PowerFab

is a comprehensive software suite that provides a systematic, collaborative approach to managing steel fabrication—from start to finish.

Trimble products included:

Tekla PowerFab
Tekla PowerFab Go
Connect Business Premium



PowerFab with Estimodeling

Trimble Construction One PowerFab with

Estimodeling is a management information system that provides a full, model-based estimating workflow to make your steel fabrication more accurate than ever before.

Trimble products included:

Tekla PowerFab
Tekla Structures Graphite
Tekla Model Sharing
Connect Business Premium

A large, stylized white number '08' centered on a dark blue background. The background features a faint, dark silhouette of a city skyline at the top.

Field technology

Leverage the latest hardware and software technologies to crush it in the field, keeping real-world construction aligned with designs and models.



Imagine if...

Field engineers, you could experience the full project before or as it's built by harnessing some of the most advanced technology in construction. Cutting-edge scanning, layout, and virtual/augmented reality technology allow you to capture precise 3D and other project data in the field in minutes. You can perform accurate measurements, generate detailed floor plans, and create precise digital twins that help your teams save time, reduce costly rework, and improve project efficiency.

As a result, the work you do fuels efficiency and increases profitability opportunities across other phases of the design and construction. Collaboration is improved, communications become clearer, and project stakeholders gain a shared understanding of the project's goals and progress. Problems can be prevented before they happen and when challenges arise, they're easier to navigate and overcome.

Trimble Construction One makes this dream a reality with these connected field technology bundles. Ensure your design visions match the on-site reality for your projects.

With Trimble Construction One's field technology bundles, you can:

- Create and collaborate more efficiently and effectively
- Capture and share accurate information through connected data and workflows
- Leverage cutting-edge tools like 3D, laser scanning and virtual or augmented reality
- Foster better understanding of project goals
- Build predictability into your construction process



Connect AR

Trimble Construction One Connect Augmented Reality (AR)

gives building construction professionals greater accessibility to 3D models in the field using mobile devices. This helps your project teams detect errors, observe omissions, and visually collaborate to resolve them.

Trimble products included:

Connect AR
Connect Business Premium

Robotic Layout

Trimble Construction One Robotic Layout

is construction layout hardware that lets you bring the precision and detail of the 3D models to the field, saving you time and money as you match your design work to the real-life job site.

Trimble products included:

Robotic Total Stations

3D Scanning System

Trimble Construction One 3D laser scanning system lets you view, scan, model, and layout your project data together in real-time. Extend your workflows and precisely capture as-built conditions while increasing efficiency and confidence in the field.

Trimble products included:

X7 3D Laser Scanner

Project Inspection

Trimble Construction One Project Inspection

lets you seamlessly integrate the digital and physical worlds for all construction project stakeholders. Combining Connect AR (augmented reality), Connect MR (mixed reality), and the Trimble XR10 with the HoloLens 2 safety-certified hard hat, it's easy to overlay the digital model over the job site and view the design in its real-life context.

Trimble products included:

Connect AR
Connect MR
XR10—HoloLens 2
Connect Business Premium



09

Financial and back-office management

Trust your numbers. Keep cash flowing, your workforce happy, and your construction business growing with connected data and workflows that fuel informed decisions and boost profit.



Imagine if...

Finance and back-office professionals, the moment you log into your connected construction management platform in the morning, your financial and other back-office data and dashboards are up to date. You watch as automated workflows instantly update your back-office ERP fields when new information is entered by your employees or extended project teams.

You know, right away, what your key tasks or issues are for today, and which projects or areas need help. With just a few clicks, you can retrieve an accurate, up-to-date view of all of your project and business financials, hiring and onboarding, payroll, and more. You can easily adjust or make changes when necessary. Building reports or digging deeper into analytical aspects of your accounting, financials, and workforce is as easy as dragging and dropping the data. And, you can share relevant, accurate data with the right teams and external stakeholders with ease.

Trimble Construction One makes this dream a reality with connected construction financial management bundles. Share the right data with the right people at the right time.

With Trimble Construction One's financial management bundles, you can:

- Run a better, more profitable business
- Expand access to real-time, standardized data in formats users need
- Streamline work to remove manual processes
- Keep bills and people paid, and cash flow into the business steady
- Dig deeper into project analytics to uncover opportunities and create strategic plans

Trimble's ERP solutions extend beyond the day-to-day accounting tasks, providing data and tools to the construction professionals who need it most, including:

- **Construction Operations:**
Easily capture in-field labor, equipment, and materials data by phase or cost type on an offline capable mobile device.
- **Mobile Service Management:**
Streamline work orders and associated service tasks for technicians.
- **HR Management:**
Quickly onboard employees remotely or on the jobsite, and provide self-service HR tools for your workforce.



Trimble Construction One Financial Management

Our real-time job costing, financial, and back office management solutions give users a modern competitive edge. Automate processes, gain greater financial visibility into projects, and reduce costly mistakes and delays from manual data entry.

Provide timely reporting of critical financial data with unrivaled visibility and control, with leading-edge tools for accounting, project management, equipment and materials management, service management, document control, HR and payroll, inventory, reporting, and much more.

Trimble Construction One™

[construction.trimble.com/en/trimble-construction-one](https://www.construction.trimble.com/en/trimble-construction-one)

Talk to a Trimble Construction One expert to learn how a connected construction suite could transform your business.

About Trimble

Trimble is an industrial technology company transforming the way the world works by delivering solutions that enable our customers to thrive. Core technologies in positioning, modeling, connectivity and data analytics connect the digital and physical worlds to improve productivity, quality, safety, transparency and sustainability. From purpose-built products to enterprise lifecycle solutions, Trimble is transforming industries such as agriculture, construction, geospatial and transportation. For more information about Trimble (NASDAQ: TRMB), visit: www.trimble.com.